



GEORG FRIEDRICH HÄNDEL
(1685–1759)

edition stephan schulte

"Ankunft der Königin von Saba"

aus der Oper "Solomo"
HW 67

London 1748

Original für 2 Oboen & Streicher (B-Dur)

eingrichtet für
2 Sopransaxophone & Orgel
von Stephan Schulte

Partitur & Stimmauszug

Ankunft der Königin von Saba

Sinfonia aus der Oper "Salomo"

G. F. HÄNDEL

(1685-1759)

Allegro ♩ = 112

1. Sopran-
Saxophon

2. Sopran-
Saxophon

Orgel

Musical score for Soprano Saxophones and Organ, measures 1-3. The tempo is marked **Allegro** with a quarter note equal to 112 (♩ = 112). The key signature is B-flat major (two flats) and the time signature is common time (C). The Soprano Saxophone parts are currently silent, indicated by horizontal lines. The Organ part features a rhythmic pattern of eighth notes in the right hand and a steady eighth-note accompaniment in the left hand.

Musical score for Organ, measures 4-6. Measure 4 begins with a dynamic marking of *ff* (fortissimo) and a fingering of 7 7. The Organ part continues with the established rhythmic pattern, featuring a complex texture of eighth notes in the right hand and a steady eighth-note accompaniment in the left hand.

Musical score for Organ, measures 7-9. The Organ part continues with the established rhythmic pattern, featuring a complex texture of eighth notes in the right hand and a steady eighth-note accompaniment in the left hand.

Musical score for Organ, measures 10-12. The Organ part continues with the established rhythmic pattern, featuring a complex texture of eighth notes in the right hand and a steady eighth-note accompaniment in the left hand.

13

O.

17

1. Ss.
2. Ss.

20

1. Ss.
2. Ss.
O.

24

1. Ss.
2. Ss.
O.

28

1. Ss.

2. Ss.

O.

32

1. Ss.

2. Ss.

O.

35

1. Ss.

2. Ss.

O.

38

1. Ss.

2. Ss.

O.

41

1. Ss.

2. Ss.

O.

45

1. Ss.

2. Ss.

O.

49

1. Ss.

2. Ss.

O.

Measures 49-52. The first system shows vocal staves (1. Ss. and 2. Ss.) and piano accompaniment (O.). The piano part features a complex rhythmic pattern with sixteenth notes and chords. A dynamic marking 'p' is present in the piano part at measure 51.

53

1. Ss.

2. Ss.

O.

Measures 53-55. The first system shows vocal staves (1. Ss. and 2. Ss.) and piano accompaniment (O.). The piano part continues with complex rhythmic patterns and chords.

56

1. Ss.

2. Ss.

O.

Measures 56-58. The first system shows vocal staves (1. Ss. and 2. Ss.) and piano accompaniment (O.). The piano part continues with complex rhythmic patterns and chords.

59

1. Ss.

2. Ss.

O.

f

63

1. Ss.

2. Ss.

O.

66

1. Ss.

2. Ss.

O.

69

1. Ss.

2. Ss.

O.

73

1. Ss.

2. Ss.

O.

p

77

1. Ss.

2. Ss.

O.

80

1. Ss.

2. Ss.

O.

83

1. Ss.

2. Ss.

O.

86

1. Ss.

2. Ss.

O.

1. Sopran- Saxophon

Ankunft der Königin von Saba

Sinfonia aus der Oper "Salomo"

Allegro ♩ = 112

16

17

22

25

28

34

37

1. Sopran- Saxophon

45



48



52



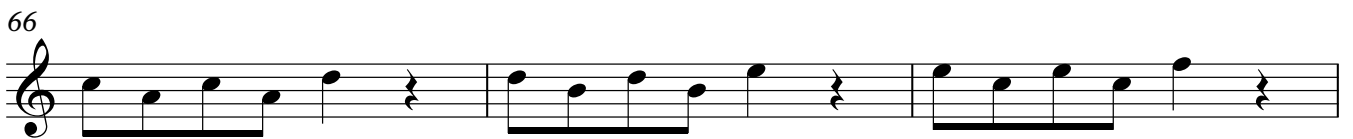
55



63



66



69



72



88



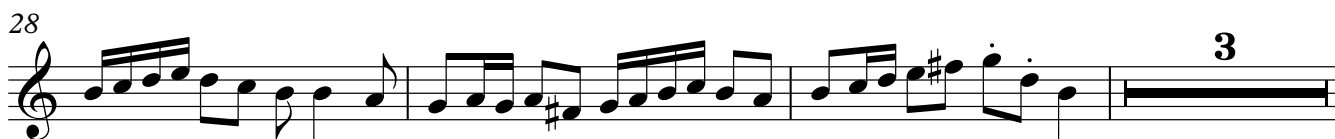
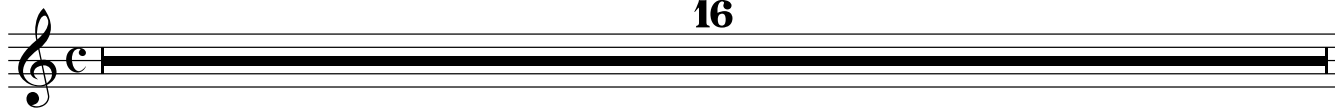
2. Sopran- Saxophon

Ankunft der Königin von Saba

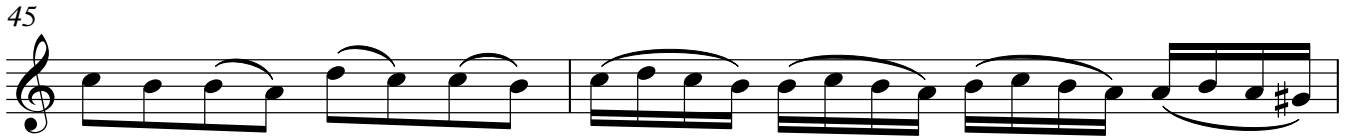
Sinfonia aus der Oper "Salomo"

Allegro ♩ = 112

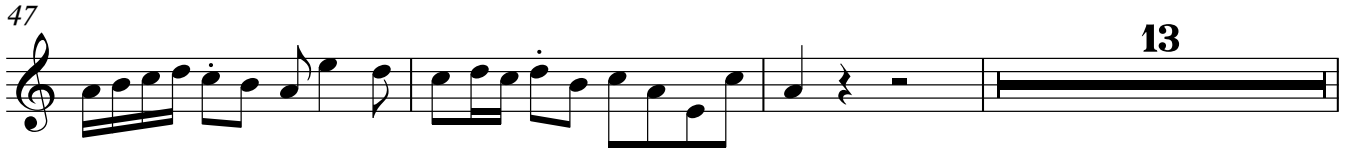
16



45



47



63



66



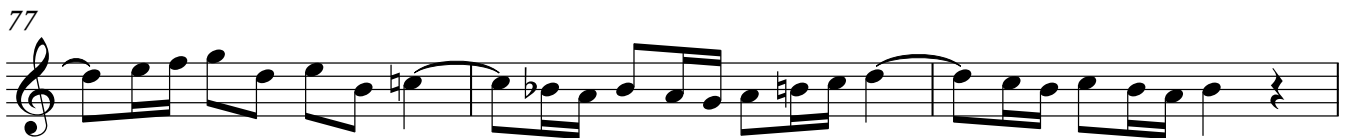
69



73



77



80

